

SEMESTRAL ASSESSMENT 1 / 2017

PRIMARY 4

SCIENCE

(BOOKLET B)

Name : _____ ()

Date : 9 May 2017

Class : P4 _____

Total Time for Booklet A & Booklet B : 1 hour

INSTRUCTIONS TO CANDIDATES

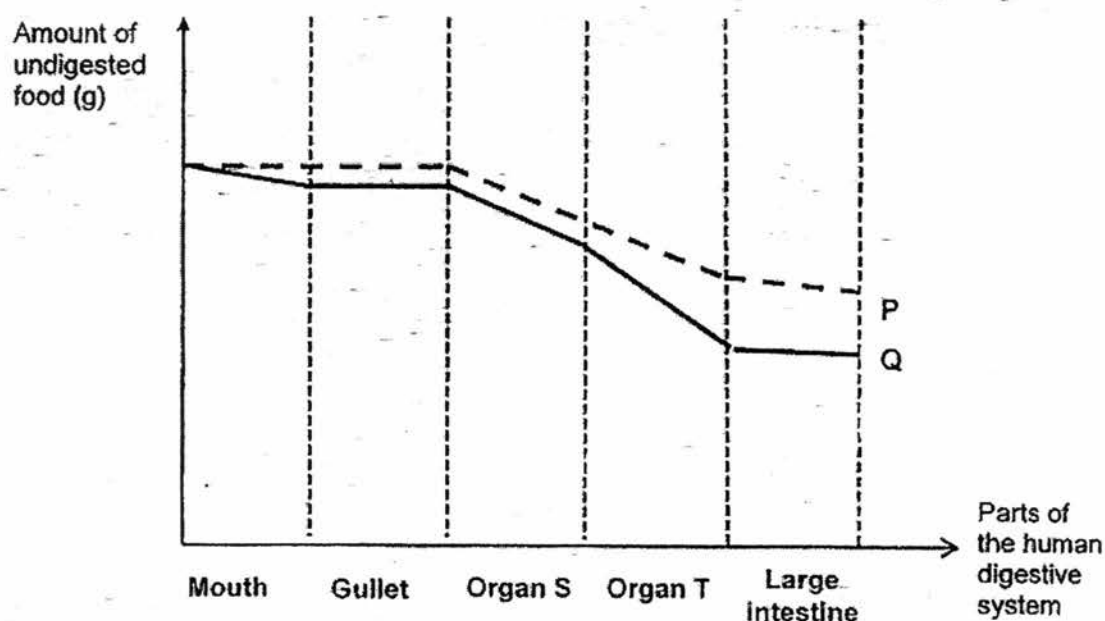
1. Write your name, index number and class in the space above.
2. Do not turn over this page until you are told to do so.
3. Follow all instructions carefully.
4. Answer all questions.
5. For Section A, shade your answers for questions 1 to 15 in the Optical Answer Sheet (OAS) provided.
6. For Section B, write your answers for questions 16 to 20 in the space provided in the booklet.
7. The total marks for Booklet B is 20 marks.

Booklet A		/30
Booklet B		/20
Total		/50
Parent's Signature		

Section B (20 marks)

For Questions 16 to 20, write your answers in this booklet.

16. Study the graphs shown below.



(a) Name Organs S and T.

[2]

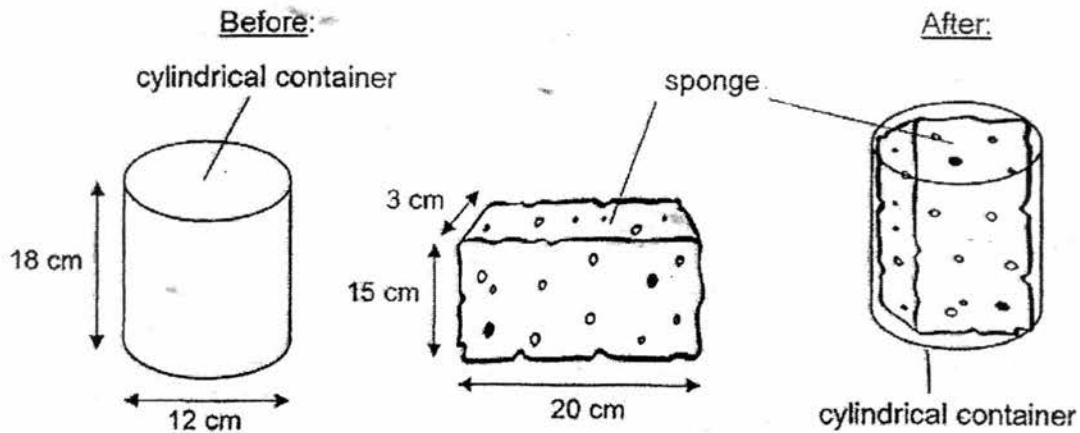
S: _____ T: _____

(b) From the graph, it can be observed that more digestion took place at Organs S and T. State a difference between Organs S and T.

[2]

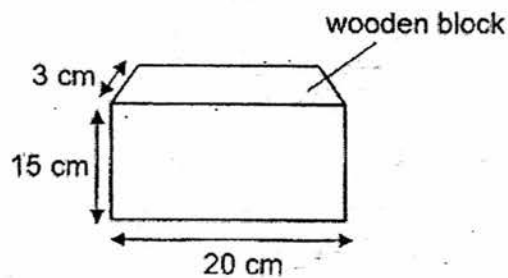
	4
--	---

17. Katy was given a sponge and a cylindrical container as shown in the diagram below. She was able to squeeze the whole sponge into the cylindrical container.



- (a) Explain how Katy was able to put the sponge into the cylindrical container. [2]

- (b) Katy found a wooden block shown below, which is of the same size as the sponge.



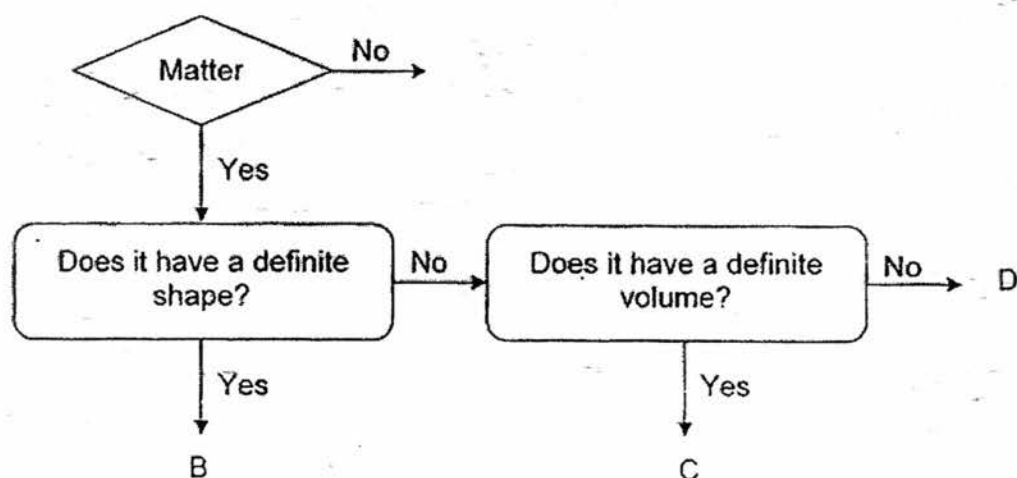
She realised that she was unable to squeeze the wooden block into the cylindrical container. Why is that so? [2]

	4
--	---

18. The table below shows the characteristics of three objects P, Q and R.

Characteristic	P	Q	R
Occupies space	✓	✓	✓
Can be compressed	✓		
Takes the shape of its container	✓	✓	

The objects are classified in the flowchart below.



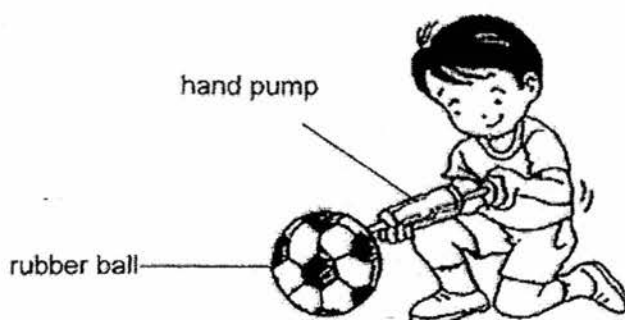
- (a) In which group A, B, C or D, can Objects P and Q be classified? [1]

P: _____ Q: _____

- (b) Which state of matter (solid, liquid or gas) is Object R? [1]

	2
--	---

- (c) Danny pumps in more air into a rubber ball using a hand pump.



No. of times he pumps in air	Mass of rubber ball
1	300g
3	310g
5	320g
7	?
9	340g

- (i) Predict the mass of the ball at the 7th time when Danny pumps in the air. [1]

g

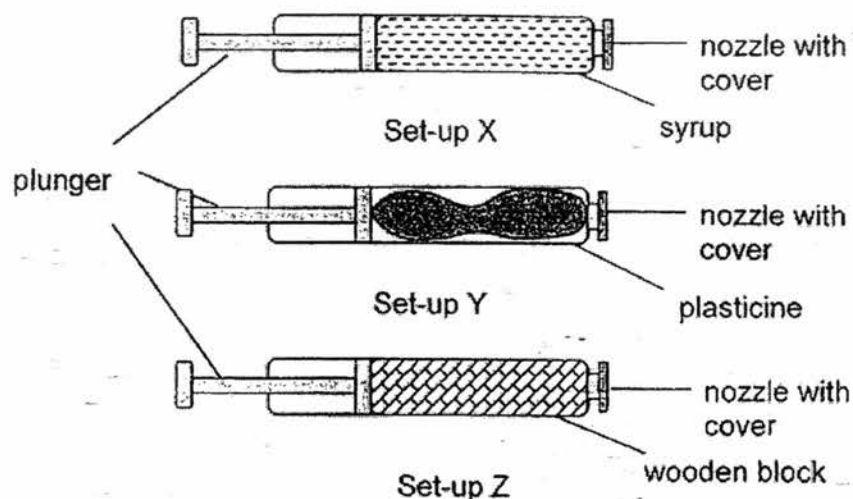
- (ii) Based on the above results, what can Danny conclude? [1]

Danny can conclude that as he pumps in more air, the _____

of the rubber ball _____.

	2
--	---

19. Weiwei filled three syringes with different substances as shown below.



He covered the nozzle of each syringe and tried to push the plunger in.

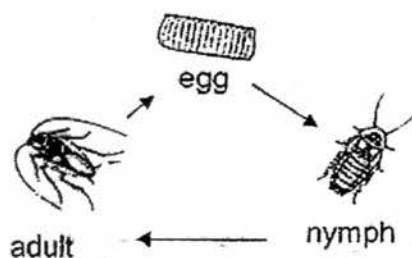
- (a) What property of matter was Weiwei trying to test? [1]

- (b) Explain clearly why the plunger in Set-up Y can be pushed in. [1]

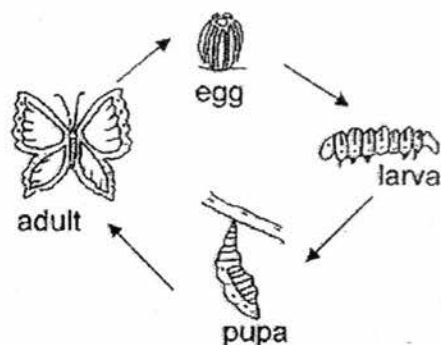
- (c) Though Weiwei removed the cover of the nozzle in Set-up Z, he was still [2]
unable to push the plunger all the way in. Give a reason for this.

	4
--	---

20. The diagrams below show the life cycle of a cockroach and a butterfly.



life cycle of a cockroach



life cycle of a butterfly

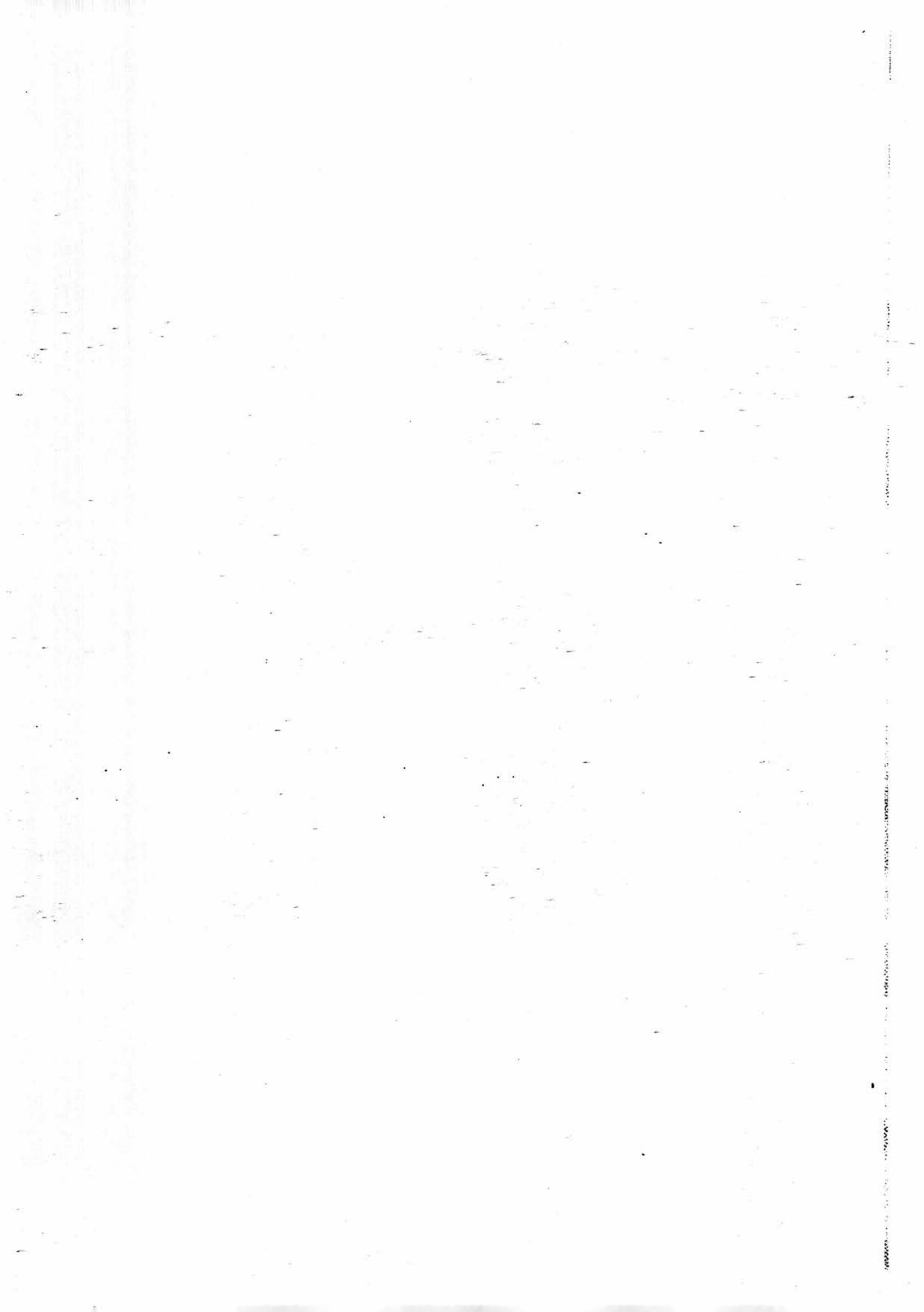
- (a) State one difference between the young of the cockroach and the young of the butterfly. [1]

- (b) Write (T) for True or (F) for False in the boxes provided. [3]

	Statements	T or F
(i)	The cockroach nymph and butterfly larva moult at this stage.	
(ii)	The butterfly stops eating at the pupa stage.	
(iii)	The butterfly larva eats the most before it reaches the adult stage.	

	4
--	---

~End of Paper~



EXAM PAPER 2017 (P4)

SCHOOL : River Valley

SUBJECT : SCIENCE

TERM : SA1

ORDER CALL :

Q1	Q2	Q3	Q4	Q5	Q6	Q7	Q8	Q9	Q10
2	4	3	2	3	1	1	4	1	4
Q11	Q12	Q13	Q14	Q15	Q16	Q17	Q18	Q19	Q20
2	2	4	1	3					
Q21	Q22	Q23	Q24	Q25	Q26	Q27	Q28	Q29	Q30

16)a)S: Stomach

T: Small intestine

b)Organ S is partially digested but organ T is fully digested.

17)a)Air spaces are in the sponge and can be compressed.

b)The wood cannot be compressed.

18)a)P: group D

Q: group C

b)Solid

c)i)330g

ii) mass , increases

19)a) Wei Wei was trying to test if it does not have a definite volume and can be compressed.

b) There are air spaces in between the plasticine so it can be compressed.

c) The wooden block has a definite volume and could be compressed.

20)a) The young of the cockroach resemble the adult but the young of the butterfly does not resemble the adult.

b)i) T

ii) T

iii) T